

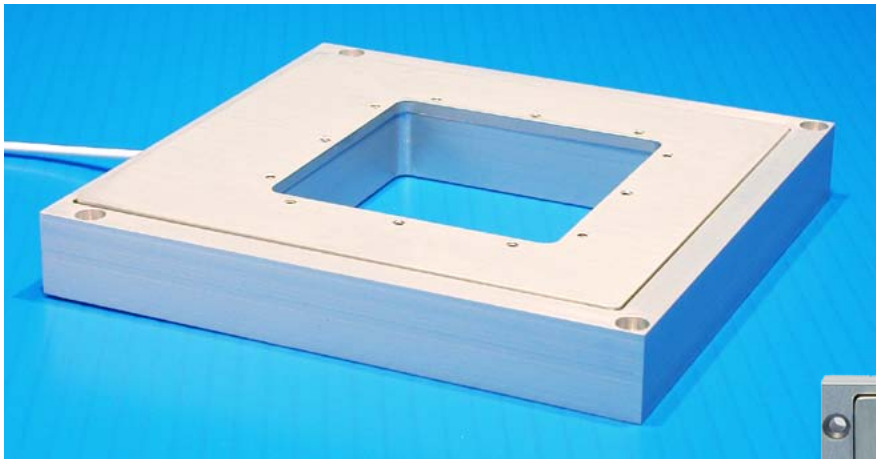
Nano-ZS Series

Features

- ▶ Engineered to retrofit to most microscopes
- ▶ Low profile: 0.8"
- ▶ Large aperture: 2.6" x 2.6"
- ▶ Long range motion: 100 μm or 200 μm
- ▶ Closed loop control
- ▶ **pico** sensor technology

Typical Applications

- ▶ Optical microscopy
- ▶ High speed confocal imaging
- ▶ High speed auto focus
- ▶ Super resolution microscopy



Nano-ZS z-axis nanopositioner constructed from aluminum.



Nano-ZS with top surface slide holder.

Product Description

The Nano-ZS Series are single axis (Z-axis) nanopositioning systems with a low profile design, allowing it to be easily retrofit into existing instrumentation where space is restricted. With a large center aperture, the Nano-ZS Series is ideal for confocal imaging and microscopy applications which require long range travel and fast, repeatable positioning. Combined with the high output

power Nano-Drive™85, the Nano-ZS Series is ideal for high speed, high precision applications. Internal position sensors utilizing proprietary **pico** technology provide absolute, repeatable position measurement with picometer resolution under closed loop control. Nano-ZS Series stage dimensions can be customized to fit into OEM applications.

Compatible Software Packages



control



AMS
USB and analog motion control



THE OPEN SOURCE MICROSCOPY SOFTWARE
USB motion control



MetaMorph
USB and analog motion control



SLIDEBOOK 5.0
Analog motion control, 1 or 2 axes.

Examples, tutorial, and Nano-Route® 3D supplied with Nano-Drive® USB and analog USB interfaces.



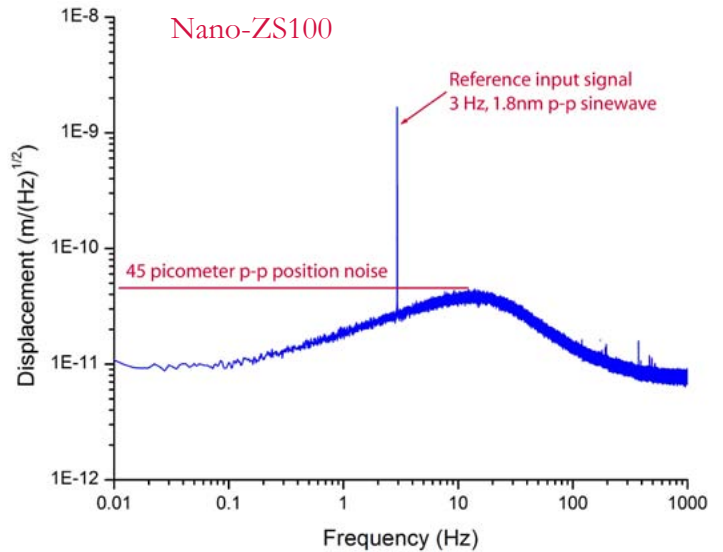
Nano-ZS with re-entrant slide holder. Re-entrant slide holders are often used with an oil immersed objective lens.

Technical Specifications

Range of motion (Nano-ZS100)	100 μm
Range of motion (Nano-ZS200)	200 μm
Resolution (100/200 μm).....	0.2/0.4 nm
Resonant Frequency (100 μm)	450 Hz
Resonant Frequency (200 μm)	250 Hz
Stiffness.....	1.0 N/ μm
Recommended max. load (horizontal)*	0.5 kg
Body Material	Aluminum or invar
Controller	Nano-Drive®/Nano-Drive®85

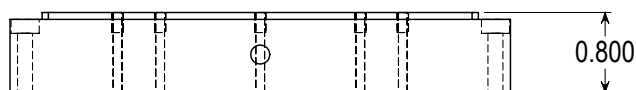
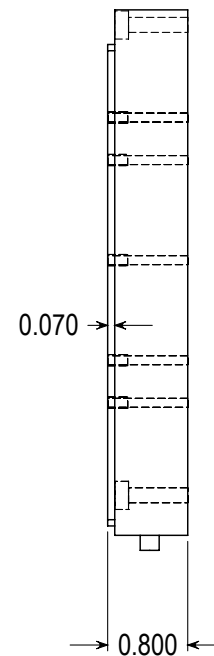
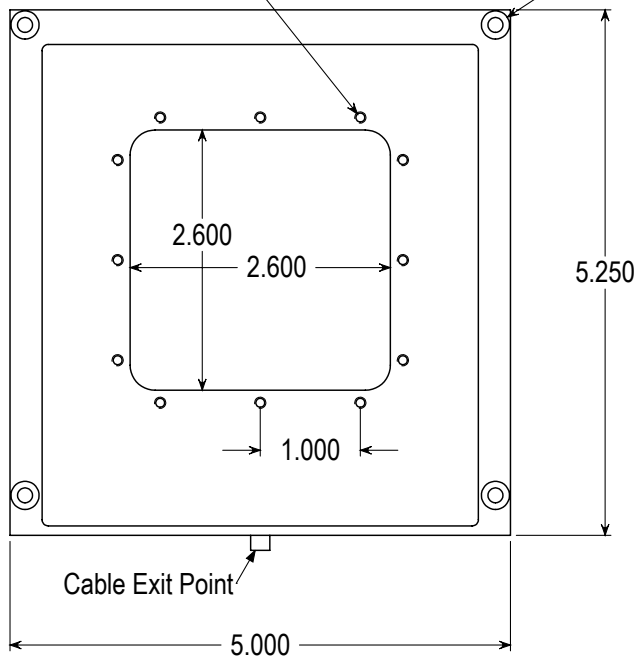
* Larger load requirements should be discussed with our engineering staff.

Low Position Noise



12 x 4-40 UNC ∇ 0.200
on a 2.85" square

4 x C-bored for #6 SHCS
on a 4.70" square



Note: All Dimensions in Inches