

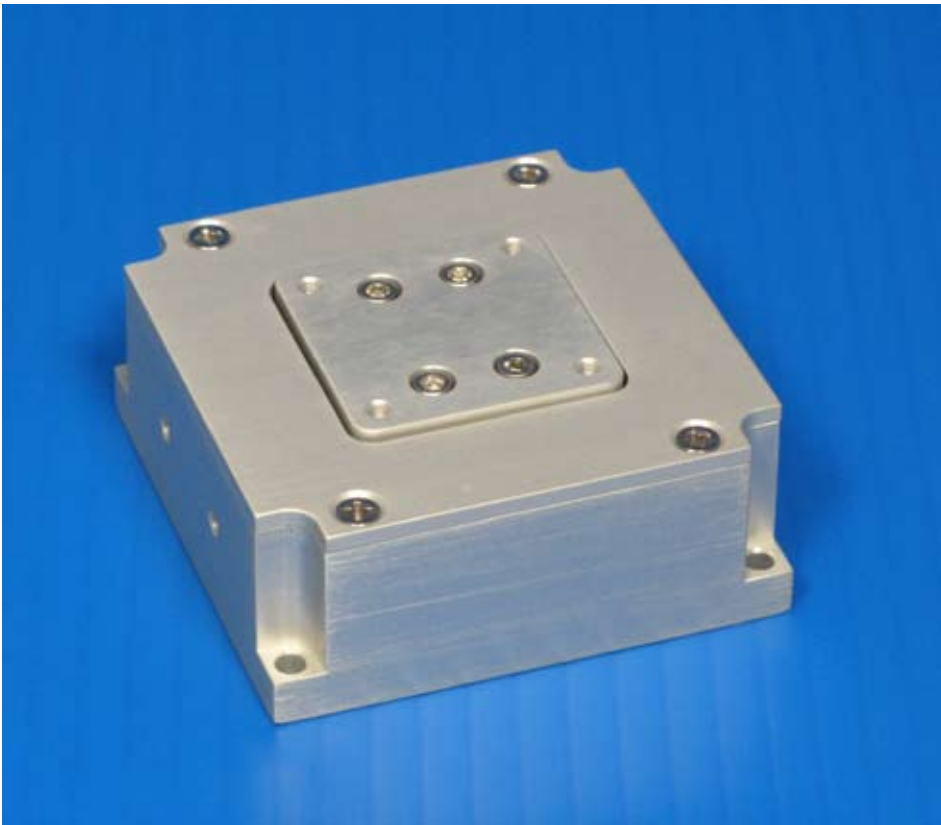
# Nano-CZ200

## Features

- ▶ *Single axis (Z) motion*
- ▶ *Long range motion - 200 $\mu$ m*
- ▶ *Compact size*
- ▶ *Closed loop control*
- ▶ **pico** sensor technology

## Typical Applications

- ▶ *Precision optical alignment and mirror positioning*
- ▶ *High resolution probe positioning*
- ▶ *Metrology*



*Nano-CZ200 constructed from aluminum.*

### LabVIEW Compatible USB Interfaces



*Examples, tutorial, and Nano-Route 3D supplied with Nano-Drive USB interfaces.*

## Product Description

The Nano-CZ200 is a compact, long range, single axis (Z-axis) precision nanopositioning system. Internal position sensors utilizing proprietary **pico** technology provide absolute, repeatable position measurement with sub-nanometer resolution under closed loop control. The Nano-CZ200 can be operated in any orientation

and is ideally suited for precision alignment of optical elements or other components with limited size and weight.

## Technical Specifications

Range of motion (Z) .....	200 $\mu\text{m}$
Resolution .....	0.4 nm
Resonant Frequency .....	500 Hz $\pm 20\%$
Stiffness .....	1.0 N/ $\mu\text{m}$
Recommended max. load (horizontal)* .....	0.5 kg
Recommended max. load (vertical)* .....	0.1 kg
Body Material .....	Aluminum
Controller .....	Nano-Drive <sup>®</sup>

\* Larger load requirements should be discussed with our engineering staff.

